

2587 2583  
15-5-26 18-5-26



## BID SOLICITATION DOCUMENTS

For

### Establishment of (Construction of Building) Cath Lab at Bacha Khan Medical Complex-MTI, Swabi

**Note:** The prospective bidder is expected to examine the Bidding Documents carefully, including all Instructions, Terms & Conditions, and Specifications etc. Failure to furnish all information required by the Bidding documents or submission of a Bid not substantially responsive to the Bidding Documents in every respect would result in the rejection of the Bid.

## **Bidding Documents for**

### **Establishment of Cath Lab at Bacha Khan Medical Complex Swabi (Civil, Electrical, Plumbing, IT Networking and Fire Fighting)**

#### **Instructions To Bidders:**

**Scope of Bid:** Hospital Director MTI GKMC/BKMC Swabi Invites sealed technical & financial bid from eligible firms registered with Pakistan Engineering Council in relevant categories & having updated registration certificate issued by PEC for the work "**Establishment of Cath Lab at Bacha Khan Medical Complex Swabi**" as mentioned in Bill of quantities attached.

**Method of Selection:** Single Stage Two Envelops procedure as per KPPRA.

**Eligible Bidders:** This invitation for bid is open for all bidders meeting following requirements

- Duly Licensed by Pakistan Engineering Council in relevant category
- Registered with Federal Board of revenue & having valid NTN No.
- Registered with KPRA.

**One Bid per Bidder:** Each bidder shall submit only one bid.

**Cost of Bid:** The bidder shall bear all cost associated with preparation & submission of bid & employer will not be responsible for any cost.

**Site Visit:** The bidders are advised to visit the site & examine the site of work & its surroundings & obtain all necessary information required for preparation of bid.

**Clarification of Bidding Documents:** Any perspective bidders who required clarification of bidding documents may notify the employer in writing on the address as mentioned in bidding

documents at least 5 days prior to last date of submission of bid. The employer will respond all clarifications in writing received within due time.

**Amendments in Bidding Documents** At any time prior to the deadline of submission of bid the employer may for any reason whether at his own initiative or in response in clarification requested by perspective bidder modify the bidding documents by issuing an addendum. Any addendum thus issued will be considered as part of bidding documents.

**Taxes & Duties:** All government taxes i.e., income tax, stamp duty & professional tax or any other government tax will be charged as per rules.

**Validity of Bid:** The bid shall be valid for 90 days.

**Employer authority to accept or reject all bids:** The competent authority has the right to reject all bids under Rule 47 of KPPRA procurement rules 2014 after assigning valid reasons.

### **Preparation of Bid:**

**Language of Bid:** The bid & all associated documents with it will be prepared in English.

**Currency of Bid:** The unit rates & prices shall be quoted by the bidders in Pakistani Rupees. Payment to successful bidder may be made in Pakistani rupees irrespective of variation in its exchange rate with international currency.

### **Bid Security:**

All the bidders must submit with their financial bids, bid security/CDR as per KPPRA notification No S.R.O (13) Vol: 1-21/2021-22 dated 15-09-2021. Otherwise, the bid shall be considered as non-responsive. An affidavit is mandatory in technical bid that bid security is placed in financial bid.

### **Performance security**

The contractor shall submit within 14 days after receipt of Letter of acceptance, a performance security in the form, amount, and validity stipulated in the conditions of contract. The performance security shall be of an amount not exceeding 10% (the contractor will submit after award of work 8% CDR in addition to 2% bid security CDR) of the contract price prescribed in the letter of acceptance Such guarantee shall be acceptable in the following form:

a) Bank guarantee from any schedule bank in Pakistan.

**Escalation/de-escalation** clause will be applicable as per PEC procedure.

**Extension of Time** due to unforeseen conditions will be applicable. The contractor will apply for EOT with appropriate justified evident with complete back up docs.

The award will be based on above/below basis on engineer estimate.

**Technical Bid:** The technical bid will be comprising of the following documents

- 1) Form of Bid signed & stamped by the bidder.
- 2) Signed copy of bidding documents.

- 3) Registration certificate of the Firm with PEC in relevant category.
- 4) Registration certificate from KPRA
- 5) Registration certificate with FBR/NTN No.
- 6) List of completed Projects of similar nature with work orders & completion certificates.
- 7) List of ongoing projects of similar nature with work orders.
- 8) Audit Reports of firm issued by chartered accountant for last three years audit reports must be attested.
- 9) Bank statement with annual turnover.
- 10) List of Technical team with detail CVs & PEC certificates signed by authorized representative.
- 11) List of equipments signed by authorized representative.
- 12) Proposed Construction Schedule signed by authorized representative of the firm.
- 13) Affidavit on stamp paper duly attested by notary public that the firm or any of its owners has never been black listed.
- 14) Affidavit on stamp paper duly attested by notary public that bid security/ CDR is attached with financial bid.
- 15) Affidavit on stamp paper duly attested by notary public that the firm will execute all the works as per specifications & instructions of Engineer In charge.
- 16) Affidavit on stamp paper duly attested by notary public that the firm will provide details of field staff i.e., site Engineer, electrical Engineer, site foreman and the hospital technical staff will coordinate with the same staff. All the contractor's staff will have sound experience in their special fields.
- 17) Copy of CNIC of the owner/authorized representative.
- 18) Contact details of the firm i.e., Mobile & telephone, email & mailing address.

**Financial Bid:** The financial Bid will be comprising of the following documents:

- 1) Engineer Estimate for the work duly signed by authorized representative of the firm with his quoted rate i.e., above/below on engineer estimate.
- 2) Bid security/CDR in the name of Hospital Director MTI GKMC/BKMC Swabi.

**Sealing & Marking of Bid:** Technical & financial bids shall be sealed in separate envelopes & shall be marked as "Technical Bid" & "Financial bid" Name of the firm shall be clearly marked on both envelopes & addressed to Hospital Director MTI GKMC/BKMC Swabi. Both envelopes shall be sealed in one outer envelope & the name of firm shall be clearly marked on it as well. If the name of firm was found missing on envelopes the bid will be considered as non-responsive & will be returned unopened.

**Dead Line for Submission of Bid:** The bids must be received by the employer not later than date & time as specified in bidding documents through registered mail/courier or from the office Manager Maintenance and Engineering MTI GKMC/BKMC Swabi.

**Late Bids:** Any bid received by the employer after the deadline for submission of bids will be returned unopened to such bidder.

**Modification Substitution & Withdrawal of Bids:** Any bidder can modify, substitute or withdraw his bid after bid submission provided that the modification, substitution or withdraw notices received by employer prior to the deadline of submission of bid.

**Opening of Bids:** The employer will open the bid in the presence of bidders on the date & time as specified in bidding documents.

### **Technical Qualification Criteria**

Technical qualification of the bidders shall be based on the criteria given in succeeding paras regarding the bidder financial soundness, experience record, equipments capabilities, personnel capabilities in addition to basic mandatory requirements. Technical qualification status shall be decided on the basis of non-responsive/responsive criteria. The applicant must obtain at least 60% marks in each category given below in detail.

#### **Mandatory Requirements:**

- 1) Registration with Pakistan Engineering Council in relevant category & codes. The registration must be renewed for the current year.
- 2) Registration with FBR & valid NTN No.
- 3) Registration with KPRA.
- 4) Proposed Construction Schedule signed by authorized representative of the firm in accordance with time of completion as mentioned in special stipulations.
- 5) Affidavit on stamp paper duly attested by notary public that the firm has never been black listed.
- 6) Affidavit on stamp paper duly attested by notary public that the firm will execute the works as per specifications mentioned in bidding documents & as per instructions of engineer in charge.
- 7) Affidavit on stamp paper duly attested by notary public that the firm will provide details of field staff i.e., site Engineer, electrical Engineer, site foreman and the hospital technical staff will coordinate with the same staff. All the contractor's staff will have sound experience in their special fields.

**Detailed Evaluation:** The applicants meeting the above-mentioned mandatory requirements will be selected for detailed evaluation. The bidders who failed to comply with mandatory requirements will be rejected. Detailed evaluation shall be carried out on

the basis of criteria for different categories & minimum passing marks prescribed hereunder:

S #	Category	Marks
1	Experience Record	30
2	Personnel Capabilities	20
3	Equipment Capabilities	20
4	Financial Soundness	30
<b>Total</b>		<b>100</b>

Experience: (Total Marks =30 i.e., 15 for Completed projects & 15 for Ongoing Projects)

1) For Completed Projects: (Table 1)

Sr. No.	Description	Max marks	Marks Allocation
a)	Experience as prime constructor in execution of similar projects. Similarity based on physical size And other Characteristics.	15	<ul style="list-style-type: none"> <li>• 7.5 Marks will be awarded for each completed building Project in the last 5 years having cost more than 100 million each up to maximum 2 projects.</li> <li>• 15 marks will be awarded for each completed building Project in the last 5 years having cost 50 to 90 million each up to or more than maximum 3 Projects.</li> </ul>
<b>Total Marks Allocated</b>			<b>15</b>

2) For Ongoing Projects: (Table 2)

S #	Description		Marks Allocation
1	Experience as prime constructor in execution of similar projects. Similarity based on physical size and other characteristics	15	<ul style="list-style-type: none"> <li>• 7.5 Marks will be awarded for each Ongoing building Project having cost more than 100 million each up to maximum 2 projects</li> <li>• 15 marks will be awarded for each ongoing building Project having cost 50 to 90 million each up to maximum 3 Projects.</li> </ul>
<b>Total Marks Allocated</b>			<b>15</b>

Personnel Capabilities: (Max 20 marks)

S No	Description	Marks assigned
1	BSc Civil Engineer registered with PEC & having more than 5 years' experience (one Civil Engineer mandatory)	4 Marks will be assigned.
2	BSc Civil Engineer registered with PEC & having experience more than 2 years	2 marks will be assigned
3	BSc Electrical Engineer registered with PEC & having experience more than 5 years. (One Electrical Engineer mandatory)	4 marks will be assigned
4	BSc Mechanical Engineer registered with PEC & having experience more than 5 years. (One Mechanical Engineer mandatory)	4 Marks will be assigned
5	DAE Civil/Electrical having experience more than 5 years.	1 Mark will be assigned for each DAE Engineer up to maximum 2 Marks.
6	IT expert having experience in IT networking	2 Marks will be assigned
7	Land Surveyor	2 Marks will be assigned
	<b>Maximum Marks</b>	<b>20</b>

Note: Verification of registration of engineers with relevant firm will be confirmed from Pakistan Engineering Council website.

**Financial Capabilities: (Total 30 Marks).**

**Average Annual Turn Over: (15 Marks)**

S No	Annual Turn Over	Assigned marks
1	Less than 100 million	0 Marks
2	100 million to 110 million	05 Marks
3	110 million to 120 million	10 Marks
4	120 million to 130 million	15 Marks
5	130 million to 140 million	20 Marks
6	140 million to 150 million	25 Marks
7	150 million to 160 million and above	30 Marks

Note: Annual turnover & liquid assets will be taken from latest bank statement & financial audit reports for the last 3 years. All audit reports must be attested & bank statement shall be verified from relevant bank.

**Equipments Capabilities:(20 Marks)**

S #	Description	Minimum no of Equipment Required	Maximum Marks
1	Concrete Site mixers	2	4
2	Generator Set (Min. 5kva)	1	2
3	Vibrator	2	2
4	Form Work (Sq. ft)	10000	2
5	Scaffolding Pipe (Rft)	3000	2
6	Dumper	1	4
7	Drills, Screw drivers etc. all tools associated with the nature of work	4 sets	4
	<b>Total Marks</b>		<b>20</b>

### **Financial Evaluation**

All the bidders who secured at least 60 % marks in technical evaluation shall be considered technically qualified & the lowest financial bid will be selected for award of contract.

**Form of Bid (To be Filled & signed by Bidders)**

**To**  
**The Hospital Director**  
**MTI GKMC/BKMC Swabi**

**Subject: Form of Bid**

Dear Sir,

1. Having examined the Bidding Documents including Instructions to Bidders, Bidding Data, Specifications, Drawings, BOQ, the site for the execution of above-named works and Addenda Nos. \_\_\_\_\_ for the execution of the above-named Works, we, the undersigned, offer to execute and complete such Works and remedy any defects therein in conformity with the Conditions of Contract. Specifications, Drawings, Bill of Quantities and Addenda.
2. We understand that all the Appendices attached hereto form part of this Bid.
3. As security for due performance of the undertakings and obligations of this Bid, we submit herewith a Bid Security in the amount of Rupees 2% of total quoted bid. \_\_\_\_\_
4. We undertake, if our Bid is accepted, to commence the Works and to complete the whole of the Works comprised in the Contract within the time stated in special stipulations.
5. We agree to abide by this Bid for the period up to 28th June 2022 from the date fixed for receiving the same and it shall remain binding upon us and may be accepted at any time before the expiration of that period.
6. Unless and until a formal Agreement is prepared and executed, this Bid, together with your written acceptance thereof, shall constitute a binding contract between us.
7. We do hereby declare that the Bid is made without any collusion, comparison of figures or arrangement with any other bidder for the Works.
8. We understand that you are not bound to accept the lowest or any Bid you may receive.

Dated this \_\_\_\_\_ day of \_\_\_\_\_ 20\_\_\_\_\_

Signature: \_\_\_\_\_

in the capacity of \_\_\_\_\_ duly authorized to sign Bids for and on behalf of

\_\_\_\_\_  
(Name of Bidder in Block Capitals) with Seal

Address: \_\_\_\_\_

## General Specifications

### **1.1 Quality/ Quantity of Materials**

MTI GKMC/BKMC Swabi Engineer shall check the quality of all materials delivered to site. Any materials which do not meet the minimum standards shall be rejected. Such materials shall be removed from site and replaced at the Contractors expense with materials of the required quality. The approved quantities of material mobilized to site are the core responsibility of contractor.

### **1.2 Quality of Workmanship**

Contractor is responsible to mobilize the skilled and unskilled persons according to work need. MTI GKMC/BKMC Swabi Engineers will reject any works which have not been executed to the required standard. The Contractor shall redo any rejected works at his own expense and with no time delays to the overall scheme.

### **1.3 Layout**

Contractor will carry out the layout with the help of MTI GKMC/BKMC Swabi Engineers for excavations and set the required bench marks as directed by the MTI GKMC/BKMC Swabi engineer. Before starting the excavations, it should be checked and got approval by the MTI GKMC/BKMC Swabi engineer.

### **1.4 Preparatory works for main works.**

No extra payment will be made for works which are not specifically mentioned in the bill of quantities but are generally required. Such works will be carried out the contractor's expense. Such works include, but are not limited to, Layout, formwork, curing, testing of materials, fittings and joints for pipes, clamping of pipes to walls, excavation for PVC pipes, embedment of G.I pipes in walls etc.

1.6 Unless otherwise specifically mentioned in the, BOQ or these specifications, all international codes like ACI, ASTM, AISI , AISC ,MBMA will govern the minimum standards required for the workmanship, materials, testing etc.

## **2 Buildings, Structures and materials**

### **2.1 Excavations**

Excavations shall be clean and free of water. All excavations shall be inspected by MTI GKMC/BKMC Swabi Engineer before work proceeds.

Excavations are dangerous and liable to collapse, particularly in wet weather or waterlogged ground. The Contractor shall take all necessary precautions to ensure that all excavations are properly protected to prevent accidental or un authorized entry. The Contractor shall be responsible for safety, mention standards and be liable for any accidents which may occur.

### **2.2 Sand**

Sand shall be clean and free from contaminants such as oil, silt, soil, wood, metal or vegetable matter.

Coarse sand, fine sand used according to their respective places such like concrete, plaster etc. or as per the approval of engineer. Sand used for plaster and concrete work should be approved from MTI GKMC/BKMC Swabi Engineer

### 2.3 Aggregate

Aggregate used for concrete shall be angular crushed rocks, and able to create bonding. It shall be clean and free from contaminants such as oil, silt, clay, wood, metal or vegetable matter. Smooth, soft and silky aggregates will not be allowed for use.

Aggregates used for concrete work should be approved by the engineer.

### 2.4 Cement

Ordinary Portland cement shall be used and delivered in sealed bags to the site. It shall be kept clean and dry until usage.

The cement should be fresh and satisfy all the engineering requirements as specified in International codes of practices.

### 2.5 Water

Water used for mixing concrete, mortar, plaster and other construction materials shall be potable, clean and free from organic materials.

### 2.6 Concrete Mixes

Concrete shall be mixed in the following proportions by volume:(As per the structural design and BOQ mentioned)

Concrete                      1:1 ½:3                      Cement: Sand: Coarse Aggregates

Concrete:                      1: 2 :4                      cement: sand: aggregate

Concrete:                      1: 4 :8                      cement: sand: aggregate

The water cement ratio shall be by weight. Too much water improves the workability but reduces the strength creates segregation of concrete. Concrete which has too much water added shall be rejected. The slump in freshly made concrete should be 3" – 4" according to the standard slump test on 12" high concrete samples. If concrete is arranged from Pre-mix, will be checked on site for temp, slump and concrete samples will be collected for 7- and 28-days strength as mentioned in structural design.

Concrete should have generally a smooth surface when formwork is removed.

The 7 days compressive strength of 1:1 1/2:3 concrete (6" dia and 12" high cylinders) shall not be less than 2000 pounds per square inch (psi) and the 28 days strength should not be less than 3000 psi.

If desired, the engineer can ask for the cylinder tests of concrete. The cost of such tests should be borne by the contractor.

### **2.7 Mixing Concrete**

Concrete mixed on site shall be mixed on a clean dry platform of level boards. Concrete shall not be mixed on the bare ground. Mixing by hand shall be carried out in the following way:

First the cement and sand shall be thoroughly mixed. Second, this mixture shall be thoroughly mixed with the aggregate which has been slightly wetted. When the mixture is completely mixed and uniform in color, the correct quantity of water shall be added, and the concrete thoroughly mixed.

Hand mixing will only be allowed if engineer on site is satisfied with the quality of workmanship, otherwise the concrete will be required to be machine mixed.

Concrete for roof will be mixed only by the machine and hand-mixing will not be allowed.

### **2.8 Placing Concrete**

Once mixed, concrete shall be used immediately. Any concrete which had been allowed to achieve its initial set shall not be placed. Concrete should be compacted by the use of vibrator or steel rods as directed by the engineer

Concrete should not be thrown from height. The steel pan should be lowered and the concrete dropped from it for its placement when done manually.

Arrangements should be made at the contractor's expense to protect the freshly poured concrete from rain for 24 hours. Any concrete damaged by rain will be rejected and the contractor will have to do the concreting again at his own cost. No extra time will be given for redoing the job.

### **2.9 Formwork**

Formwork shall be adequately braced and have a capacity to support the wet concrete after its placed. The faces of the formwork shall be smooth and clean. Mobil oil may be used to prevent the concrete adhering to the formwork.

Steel plates or plywood formwork should be used for the concrete placement. The platform will be supported by MS pipes, steel girders, joints etc. in order to make stable and firm in order to keep the concrete in place.

Kacha shuttering is not allowed at any cost and no request will be entertained. Wooden forms will be allowed only by the engineer if smooth surfaces for concrete are ensured by the contractor.

All form work and shuttering shall be approved by the Engineer before binding and placing the reinforcement.

### **2.10 Reinforcement**

Steel reinforcement shall be the correct diameter as shown on the drawings or as directed by the engineer. The bars shall be clean and free from rust. They shall be securely fixed by binding wire at every joint before placing the concrete. The minimum cover to reinforcement shall be ¼ inch. Clear covers will be specified by the engineer if not explicitly mentioned in the drawings.

The steel used for reinforcement should be of good quality and should not break when bend at 180 degrees. Engineer can ask for the standard tests of steel if unsatisfied with the quality of the steel.

#### **2.11 Curing Concrete**

Sufficient water is required for concrete curing. Poorly cured concrete will shrink or crack, and not achieve its full strength. The contractor shall ensure that all concrete is properly cured.

The concrete shall be kept continuously wet by the application of water for a minimum period of fourteen days after the concrete has been placed. Cotton mats, carpets or sand blankets, may be used as a curing medium to retain the moisture.

Roof concrete should be cured by water ponding on its surface.

#### **2.12 Concreting in Cold/ Hot Weather**

The contractor is responsible to take necessary action according to weather condition or as per the approval of engineer.

#### **2.13 Concrete Finishing**

Concrete shall be finished to a smooth uniform surface and finished using a metal or wooden float.

#### **2.14 Mortar**

Mortar for brick work and floors shall be mixed in the proportion 1 cement: 4 sands by volume. Sufficient water shall be added to achieve the desired workability.

The surfaces of the bricks shall be wetted before placing. Mortar shall be placed on all horizontal and vertical faces between the Bricks, with no gaps.

#### **2.15 Plaster**

Mortar for plastering of internal walls and external rendering shall be mixed in the proportion 1 cement: 4 sands by volume. Sufficient water shall be added to achieve the desired workability.

Cement water slurry should be thoroughly applied on the wetted walls before applying the mortar.

#### **2.16 Brickwork and Brick walls**

Walls shall be straight, perpendicular and dimensionally correct, constructed as shown on the drawings. The faces of walls shall be regular with no irregular bricks.

The thickness of mortar used for brickwork should be about ½ inches.

Bricks shall be of uniform size, shape, color and free from chips, cracks, nodules of lime and such defects which render it unfit for the building works. The size of bricks used should be 9" \* 4 3/8" \* 2 11/16".

Bricks should be kept immersed in water for 24 hours before using or as directed by the engineer. Dry bricks or half wet bricks will not be allowed in brickwork.

The minimum compressive strength of bricks should be 1500 psi.

The water absorption by bricks should be 15% to 20% by weight when kept immersed in water for 24 hours.

Bricks should produce a clear ringing sound when stuck together.

Bricks should not under-burnt or over-burnt. Engineer will reject the bricks if unsatisfied with their quality. Engineer can also ask for the compressive, water absorption or other tests to make sure that the bricks satisfy the minimum quality requirements.

Brickwork should be cured for at least 7 days after its construction or as directed by the engineer.

#### **2.17 Paint Work**

Paint work should be installed smooth surface of plaster and used sand paper for this purpose. Enamel and weather shield should be used as specified in BoQ specification in their respective places.

#### **2.18 Doors/ Ventilator**

Door, windows and Ventilator are used of approved materials as specified in BOQ. Any material or equipments used for the fixing of doors and ventilators will be the responsibility of contractor with no extra cost.

### **3 Water Systems**

#### **3.1 G.I. Pipe**

Pipe shall be of required diameter and quality and brand as specified in the bill of quantities.

#### **3.2 Pipe Connections**

Connections shall be cleanly welded/ Jointed and tested for leaks. Untidy or leaking joints shall be re-made to the approval of the Engineer.

All connections to pumps, valves and other fittings shall be threaded or flanged to enable removal.

#### **3.3 Pipe Laying and Bedding**

All pipe work shall be laid in a trench with a minimum depth of 1 foot or as per the approval of engineer. All pipes shall be tested for leaks before backfilling the trench.

### 3.4 Pipe Fittings

Pipe fittings shall be complete in all respect i.e., jointing, socket, tee, valves etc. with solution, threading etc.

### 3.5 Pipe Bends

Pipes shall not be bent. The correct fittings shall be used such as bends, elbows and Tees. Any bent pipe shall be removed and replaced with the appropriate fittings.

### 3.6 Pipe Protection

All steel pipes and connections shall be protected from rusting.

### False Ceiling

**Foil packed tiles, Laminated with Aluminum foil of thickness 9mm to 15 mm complete hanging and aluminum fittings arrangements.**

Pre-fab structures

External wall panels: These should be of sandwich panels 75mm+-.06mm layer medium density polystyrene and 0.45mm+-.06mm pre-painted sheet on both sides complete in all respect as per drawings provided by contractor as design and drawings will be the responsibility of the contractor.

Partition walls panels: These should be of sandwich panels 65mm+-.06mm layer medium density polystyrene and 0.45mm+-.06mm pre-painted sheet on both sides complete in all respect as per drawings provided by contractor as design and drawings will be the responsibility of the contractor.

Roof panels: These should be of sandwich panels 65mm+-.06mm layer medium density polystyrene and 0.45mm+-.06mm pre-painted sheet on both sides complete in all respect as per drawings provided by contractor as design and drawings will be the responsibility of the contractor.

Structure: GI cold roll formed section size 28\*85\*28\*1.7mm+-.06mm thickness with 0.45mm cover.

Flashing: Manufacturing of all trims , flashing as per approved drawings complete in all respect.

Doors: GI cold roll formed single frame section 0.9mm +- 0.06mm thickness with powder coated with special hinges, door leaf will be filled with medium density polystyrene with both sides formed GI sheet 0.6mm +- 0.06mm thickness and thickness of leaf 36mm with powder coated with all type of reinforcement.

Windows: GI cold roll formed single glazed window section 0.7mm +- 0.06mm thickness various profiles for maximum strength section width 84mm with powder coated with 5 mm clear glass or aluminum windows.

**NOTE:** The architectural and structural design for the building, Electrical, firefighting, IT networking and plumbing drawings will be provided by the contractor. The design will include either the vetting of the existing structural design by a PEC registered firm preferably Govt Engineering and Technology University or new structural design (including soil investigation and mix design for concrete). The design charges will be paid as NSI item as per the invoice paid to designer by the contractor.

The architectural design will include plans, building elevation (Front, sides and back view) and 3D view.

All the existing services i.e. electrical, water supply lines, sewerage lines and gas supply lines diversion/relocating/shifting will be the contractor responsibility free of cost prior to the initiation of the construction of the main building.

The contractor shall submit samples of all type of materials to the committee constituted for the construction of the Cathlab building prior to the initiation of the activity on site.

### LIST OF APPROVED MANUFACTURERS (CIVIL WORKS)

(To be signed by the Bidder)

The Contractor should note that only material from those manufacturers specified in the list of approved manufacturers shall be allowed to be used on this Project. The Contractor shall submit literature/catalogue/samples etc. of all the items from each of the specified manufacturers to the Engineer who shall then decide and approve the sample and the manufacturers. Where the item involves any finishes such as paints, external coating, etc. the Contractor shall erect mock-up samples of the specified manufacturers for the selection and approval of the Engineer.

Onus lies with the Contractor for establishing the genuineness of any material/product/item for its make and origin as specified below:

S. No.	MATERIALS	MANUFACTURERS/BRANDS
1	Ceramic Tiles	Stile/ Shabir, Master or Equ.
2	Porcelain Tiles	Stile/ Shabir, Master or Equ.
3	Paints & Varnish	ICI, Berger, Nippon
4	Door Locks/Door closers	USA/ West European / Japanese Origin or Equ.
6	Imported Tiles (Ceramic/Porcelain)	RAK, Malaysian, China or approved equivalent
7	Aluminum Sections	Chawala, prime, Etihad Aluminum or approved equivalent
8	Precast Concrete Interlock Pavers	Tuff Pavers, Izhar, Envi Crete, Concrete Concept, Concrete Wizard or Equa:
9	False Ceiling including Suspension System	Daiken (Japan), Dampa (Denmark) & OWA (Germany), or United, Arish gypsum board or Equivalent best quality.
10	Bricks	33 trade, PR-1 mark or approved equivalent
11	Lamination Board	Formite, ZRK or approved equivalent
12	Cement	Cherat, Askari, Kohat or equivalent

### LIST OF APPROVED MANUFACTURERS (PLUMBING)

(To be signed by the Bidder)

S.No	ITEMS	MANUFACTURERS/BRANDS
1.	G.i. pipe	i. M/S International Industries Limited
ii.		M/S Jamal Pipe Industries (Pvt) Limited
iii.		M/S Bashir Pipe Industries (Pvt.) Limited

2.	G.i.pipe fittings	i.	M/S. He China or Equi.
ii.		M/S. TG China	
3.	M.S. pipes & fittings	i.	M/S Jamal Pipe Industries (Pvt) Limited
ii.		M/S Haffaz.	
4	Sanitary fixtures	i.	Master & Faisal M/S Asian Standard (China)
ii.		M/S. Porta (China)	
iii.		M/S I.C.L.	
5	Sanitary fittings	i.	M/S Master, Faisal. Dur.
ii.		M/S Sonex	
6	Valves	i.	M/S Scon or Approved Equivalent M/S Mecco
7	Water cooler	i.	
ii.		M/S Caravell	
iii.		M/S Comfort	
8	Fire extinguishers	i.	M/S Haseen Habib Corporation (Pvt.) Ltd. City Fire & Safety Services M/S Dadex Enternit Ltd.
9	UPVC pipe and fittings	i.	
ii.		M/S Turkplast	
iii.		M/S Master Pvt Ltd Or Equ:	
10	PPR pipe & fittings	i.	M/S Dadex
ii.		M/S Master Pvt Ltd.	
iii.		M/S Turkplast	
11	Water filters	i.	M/S So-Safe
		ii.	M/S Aqua Safe
12	Epoxy paint (antibacterial, antimicrobial) liquid stainless paint	i.	Silver Bulet Am(Burke) or Equ.(Imported)

NO.	EQUIPMENT/ MATERIALS	MANUFACTURERS/BRANDS
1.	LV and Control Cables and Wires (600/1000 V)	Pakistan Cables, Fast Cables, Newage Cables, Popular, Galco, Plasco or EQU
2.	PVC Conduit & Accessories	
3.	Steel Conduit & Accessories	Hilall Industries, IIL, Jamal, Pioneer or Equ:

4.	MCCBs, MCB Magnetic Contactors	Jubilee Corporation (Pak), Siemens (Germany), ABB (Italy), Terasaki (Japan) Panasonic Green power (Japan), Telemecanique
5.	UPS	Tesla, Homage, Inverex or Equ:
6.	High Voltage Cables(15 kV)	Newage Cables, Pakistan Cables, Fast Cables
7.	Capacitors	Amber, Nokian, Ducati, Jubilee or Equ:
8.	Voltmeter/Ammeters	Circular (Italy), Revalco (Italy), Inter (Turkey), Entes (Turkey), Jubilee Corporation (Pak).
9.	Back Boxes, Pull boxes etc.	Bosch, Milano, Legrand, Clipsal, Opal and ABB.
10.	Ceiling Fans & Exhausts	Pak., Lahore Fan, Royal, Climax, GFC, Taimour
11.	Low Voltage Panel, MMC & ACP	SA Electric Concern, Elmetec, PEL, Bilal Switch. Al-Rehman Switchgear, Messi.
13.	Lighting	Philips, Thorn, Pierelite, Sunlight, Pak Lights.
14.	Main Distribution Board	Techno, Power Tech, Electrech, Bilal Switchgear
15.	DC Inverter AC	GREE, PEL, TCL

ESTABLISHMENT OF CATH LABS AT DIFFERENT HOSPITAL OF THE PROVINCE ON NEED BASIS "ADP NO 530/240233(2025-2026)BKMC/GKMC-MTI Swabi				
SNO	DESCRIPTION	SCHEDULE ITEM	NON SCHEDULE ITEM	TOTAL AMOUNT
1	Civil Works	60,143,827	5,241,178	65,385,005
2	Plumbing Works	3,184,967	481,596	3,666,563
3	Electrical Works	16,384,866		16,384,866
4	Networking		10,831,750	10,831,750
5	Fire protection	1,199,220		1,199,220
	<b>TOTAL AMOUNT</b>	<b>80,912,880</b>	<b>16,554,524</b>	<b>97,467,404</b>
<b>TOTAL AMOUNT IN MILLION</b>				<b>97.47</b>

**ESTABLISHMENT OF CATH LABS AT DIFFERENT HOSPITAL OF THE PROVINCE ON  
NEED BASIS "ADP NO 530/240233(2025-2026)BKMC/GKMC-MTI Swabi**

1	03-20-d	Transportation of earth all types for every 1 km extra lead or part thereof beyond 8 km.	m3	31.27	54.149	Metric	1,693
2	03-25-b	Excavation in foundation of building, bridges etc complete : in ordinary soil	m3	360.39	212.52	Metric	76,590
3	04-13.	Dismantling brick work in lime or cement mortar	m3	1898.61	27.609	Metric	52,419
4	04-19-a	Dismantling : Plain Cement Concrete 1:4:8	m3	2457.02	14.34	Metric	35,234
5	04-19-c	Dismantling : Plain Cement Concrete 1:2:4	m3	4914.04	11	Metric	54,054
6	06-05-f	Plain Cement Concrete including placing, compacting, finishing & curing (Ratio 1:2:4)	m3	17035.28	59.299	Metric	1,010,175
7	06-05-i	Plain Cement Concrete including placing, compacting, finishing & curing (Ratio 1:4:8)	m3	12340.56	111.19	Metric	1,372,147
8	06-07-b-02	RCC in raft foundation slab, base slab of column & ret.wall etc, not including in 06-07-a-02 (1:1.5:3)	m3	22219.08	398.5	Metric	8,854,303
9	06-08-b	Supply & fabricate M.S. reinforcement for cement concrete (Hot rolled deformed bars Grade 60)	Tonne	306713.5	46.32	Metric	14,206,969
10	06-47-a	Erection and removal of Form work with Steel Surface Finishing for RCC or Plain Concrete in any shape - Position / Horizontal	m2	970.34	960.86	Metric	932,361
11	06-47-b	Erection and removal of Form work with Steel Surface Finishing for RCC or Plain cement Concrete in any shape - Position / Vertical	m2	1010.2	226.389	Metric	228,698
12	07-04-a-04	1st class brick work in foundation and plinth in Cement, sand mortar 1:5	m3	16554.63	93.859	Metric	1,553,801
13	07-05-a-04	1st class brick work in ground floor Cement, sand mortar 1:5	m3	17664.81	454.579	Metric	8,030,052
14	07-06-a	Add extra on item No.07-05 for brick work in First floor	m3	666.3	277.47	Metric	184,878
15	07-06-b	Add extra on item No.07-05 for brick work in in Second floor	m3	1515.08	100.36	Metric	152,053
16	07-36-c	Masonry using Facing/Special bricks in cement sand mortar 1:4 upto 10 ft. height (4-1/2" thick)	m3	19235.36	83.709	Metric	1,610,173

17	09-01.	First class tile roofing including earth, mud plaster, gobri leeping, cement plaster etc complete	m2	3907.31	294.24	Metric	1,149,687
18	10-15-d	Provide & lay topping of concrete 1:2:4, including surface finishing & dividing in panels : 2" thick	m2	1431.12	371.87	Metric	532,191
19	10-22-b	1.5" thick mosaic flooring, including rubbing & polishing complete : Using white cement	m2	3177.91	980.48	Metric	3,115,877
20	10-26-c-ii	Provide & lay marble fine dressed stone flooring on surface in white cement complete: 3/4" thick 24 x 24 Sunny White Marble	m2	4911.01	156.13	Metric	766,756
21	10-41-b-02	Mosaic dado or skirting complete as per specs Using white cement : 1/2" thick including grinding and polishing	m2	2189.29	1033.46	Metric	2,262,544
22	10-55-j	Providing and Fixing of Bath Room Tiles 12"x18" of approved quality	m2	2562.82	230.03	Metric	589,525
23	10-60-a	Providing and laying 3/4"(19mm) thick Granite Black polished tiles of approved quality of any size on floor over 3/8" thick base cement sand mortar 1:3 including setting the tiles with portland cement slurry over cement sand jointing and washing the tiles with cement slurry of matching color including grinding, rubbing, polishing & mortar cost.	m2	11848.78	11.46	Metric	135,787
24	11-11-c	Cement Plaster 1:5, upto 20' height 3/4" thick	m2	682.12	2292.739	Metric	1,563,923
25	11-18-b	Cement pointing struck joints, on walls, upto 20' height : Ratio 1:3	m2	530.25	762.75	Metric	404,448
26	11-20-b	Providing and applying wall putty of 2mm thickness over plastered surface to prepare the surface even and smooth complete.	m2	89.32	1036	Metric	92,536
27	11-21-a-03	Distemping New surface : Three coats	m2	231.95	785.12	Metric	182,109
28	12-27-a	Provide & fix wooden box type wardrobe 22" deep Partal wood boxing & deodar wood shelves etc	m2	29093.68	29.739	Metric	865,217
29	12-47.	Supply and Fixing accoustic mineral fibre tile ceiling fixed with aluminium tee hung by GI wire fixed in roof	m2	2520.09	985.87	Metric	2,484,481

17	09-01.	First class tile roofing including earth, mud plaster, gobri leeping, cement plaster etc complete	m2	3907.31	294.24	Metric	1,149,687
18	10-15-d	Provide & lay topping of concrete 1:2:4, including surface finishing & dividing in panels : 2" thick	m2	1431.12	371.87	Metric	532,191
19	10-22-b	1.5" thick mosaic flooring, including rubbing & polishing complete : Using white cement	m2	3177.91	980.48	Metric	3,115,877
20	10-26-c-ii	Provide & lay marble fine dressed stone flooring on surface in white cement complete: 3/4" thick 24 x 24 Sunny White Marble	m2	4911.01	156.13	Metric	766,756
21	10-41-b-02	Mosaic dado or skirting complete as per specs Using white cement : 1/2" thick including grinding and polishing	m2	2189.29	1033.46	Metric	2,262,544
22	10-55-j	Providing and Fixing of Bath Room Tiles 12"x18" of approved quality	m2	2562.82	230.03	Metric	589,525
23	10-60-a	Providing and laying 3/4"(19mm) thick Granite Black polished tiles of approved quality of any size on floor over 3/8" thick base cement sand mortar 1:3 including setting the tiles with portland cement slurry over cement sand jointing and washing the tiles with cement slurry of matching color including grinding, rubbing, polishing & mortar cost.	m2	11848.78	11.46	Metric	135,787
24	11-11-c	Cement Plaster 1:5, upto 20' height 3/4" thick	m2	682.12	2292.739	Metric	1,563,923
25	11-18-b	Cement pointing struck joints, on walls, upto 20' height : Ratio 1:3	m2	530.25	762.75	Metric	404,448
26	11-20-b	Providing and applying wall putty of 2mm thickness over plastered surface to prepare the surface even and smooth complete.	m2	89.32	1036	Metric	92,536
27	11-21-a-03	Distempering New surface : Three coats	m2	231.95	785.12	Metric	182,109
28	12-27-a	Provide & fix wooden box type wardrobe 22" deep Partal wood boxing & deodar wood shelves etc	m2	29093.68	29.739	Metric	865,217
29	12-47.	Supply and Fixing accoustic mineral fibre tile ceiling fixed with aluminium tee hung by GI wire fixed in roof	m2	2520.09	985.87	Metric	2,484,481

30	12-58.	24 SWG aluminium kick plate 4" high, on bottom rail of flush doors of commercial ply	m	385.96	103.63	Metric	39,997
31	12-59.	Providing and Fixing of 6mm thick Aluminium Cladding with 0.5mm Aluminium sheets of approved color & design on both sides of PVC (FR) including Cost of G.I.C channel 18 SWG frame, all necessary fittings, GI Scaffolding etc. complete in all respects (18"x24" Mesh)	m2	15629	147.84	Metric	2,310,591
32	12-60.	Curtain railing to doors & windows comprising railing of approved quality including paint	m	1417.73	67.28	Metric	95,385
33	12-63-a	Hollow flush door 2" thick including iron mongery excluding chowkat & lock : Teak veneered	m2	17189.47	97.59	Metric	1,677,520
34	12-64-a-05	Supply and Fixing aluminium door/window, Fixed Glazing Premium model (2.00 mm gauge) 3" section	m2	12887.87	176.58	Metric	2,275,740
35	12-68.	Providing and fixing PVC wall Panelling 9" wide and 10 ft long hard including all accessories of approved design in any color, shade and pattern in ground floor.	m2	1734.21	245.759	Metric	426,198
36	12-70-a	Supply and Fixing MS Sheet 16 gauge (10" x 2") box type chowkats including fixing in position with all charges for Hold fast, Hinges and Painting etc	m	2139.62	243.22	Metric	520,398
37	12-73-c	Providing and fixing First class shisham wood projected beading upto one sq.inch.(6.5sq.cm.) wide in section, designed, fixed around the panels of doors, windows of any description.	m	191.52	249.319	Metric	47,750
38	13-03-c-01	Prepare & Paint new surface, doors & windows Priming coat	m2	339.85	145.389	Metric	49,410
39	13-03-c-02	Prepare & Paint new surface, doors & windows Each subsequent coat of paint	m2	243.31	202.979	Metric	49,387
40	13-25-a	Preparing surface & painting with snowcem / weathershield paint : First coat	m2	344.07	253.44	Metric	87,201
41	13-25-b	Preparing surface & painting with snowcem / weathershield paint : 2nd & subsequent coats	m2	189.64	253.44	Metric	48,062

42	28-23	Providing and fixing of 1-1/2" thick Thermopore in cavity wall, including all necessary fittings complete in all respect .	m2	409.05	37.909	Metric	15,507
<b>TOTAL AMOUNT SCHEDULE ITEM</b>							<b>60,143,827</b>
1	NSI-1	Providing & fixing of stainless steel box(1.5"x1.5") frame of 18swg Beading of stainless steel pipe including cost of blurr glass 12mm complete in all respect.	M2	13622	47.579	Metric	648,121
2	NSI-2	Providing&fixing12mm glass doors including lock handle hings .Aluminum frame (D 48 4" Height) bottom & top aluminum support at side in all respect.	M2	13102.8	34.2	Metric	448,116
3	NSI-3	Providing and Fixing of Partition Wall Above Counter Top with Frame of Stainless Steel 2"X2" Square pipe 16 guage & 12 MM Glass of approved design and size including all fittings complete in all respects	M2	9293.68	11.369	Metric	105,660
4	NSI-4	Providing and Fixing of Partition CURTIANS with Frame of Stainless Steel 1" Dia pipe & Blue Curtians of approved design and size including all fittings complete in all respects	M	1762	29.26	Metric	51,556
5	NSI-5	Lead lining sheet 2mm thick.PVC paneling over lead sheet including cost of hardware transporation,cutting,framing&fixing complete as per approved make & design.	M2	37625	96.099	Metric	3,615,725
6	NSI-6	Providing & fixing Lead Glass including cost of transporation hard ware & fitting complete in all respect. 24"x24"	job	186000	2	Metric	372,000
<b>TOTAL AMOUNT NON SCHEDULE</b>							<b>5,241,178</b>

**ESTABLISHMENT OF CATH LABS AT DIFFERENT HOSPITAL OF THE PROVINCE ON  
NEED BASIS "ADP NO 530/240233(2025-2026)BKMC/GKMC-MTI Swabi**

1	14-01-a	Providing and Fixing glazed earthen ware WC European type of approved size excluding cost of seat & cover, complete in all	Each	16874.87	10	Metric	168,749
2	14-02-b	Providing and Fixing double seat & cover only : Plastic	Each	947.76	10	Metric	9,478
3	14-03-a	Providing and fitting glazed earthenware water closet (WC), squatter type (orisa pattern) combined with foot rest. complete	Each	4106.76	3	Metric	12,320
4	14-05-b-02	Providing and Fixing glazed earthen ware wash hand basin (WHB) complete size 63x45 cm (25"x18"), including bracket set,	Each	11598.05	13	Metric	150,775
5	14-06-b	Providing and fixing stainless steel sink with drain board size (90x45 cm) 36"x18" including set of brackets, waste pipe etc (Best	Each	9406.3	2	Metric	18,813
6	14-13	Providing and fixing choricum plated soap dish complete.	Each	1052.08	13	Metric	13,677
7	14-15	Providing and Fixing CP (chromium plated) toilet paper holder complete	Each	1274.38	13	Metric	16,567
8	14-16-a	Providing and Fixing chromium plated (CP) towel rail complete: 60 cm (24") long and 2 cm (3/4") dia	Each	1347.25	13	Metric	17,514
9	14-17-a	Providing and fixing best quality looking glass 5 mm thick neatly fitted on masonry wall etc. as per instruction of Engineer In-charge	Each	2697.62	13	Metric	35,069
10	14-18-a	Providing and fixing best quality 5mm glass shelf (60 x 13) cm 24"x5" complete: With chromium plated brackets & railing	Each	1349.98	13	Metric	17,550
11	14-21-a	Providing and fixing chromium plated (CP) pillar-cock, heavy duty of approved quality : 2 cm (3/4")	Each	2003.04	35	Metric	70,106
12	14-21-b	Providing and fixing chromium plated (CP) pillar-cock, heavy duty of approved quality : 1.5 cm (1/2")	Each	1756.04	25	Metric	43,901
13	14-22-a	Providing and fixing chromium plated CP stop-cock, heavy type :2 cm (3/4")	Each	2126.53	55	Metric	116,959
14	14-22-b	Providing and fixing chromium plated CP stop-cock, heavy type :1.5 cm (1/2")	Each	1756.04	42	Metric	73,754
15	14-24-a	Providing and fixing chromium plated (CP) bib-cock heavy duty of approved quality : 2 cm 3/4"	Each	2003.04	55	Metric	110,167

16	14-25-a	Providing and fixing chromium plated (CP) tee stop cock 1.5 cm (1/2") of approved quality	Each	1817.78	32	Metric	58,169
17	14-27-a	Providing and fixing chromium plated (CP) mixing valve for wash hand basin (WHB), sink or shower of approved (Best) quality	Each	4003.74	13	Metric	52,049
18	14-41-a	Providing and Fixing chromium plated (CP) waste coupling of approved quality : 1.25" (32 mm)	Each	616.64	24	Metric	14,799
19	14-43-a	Providing and fixing waste pipe of PVC of approved quality : 1.25" (32 mm)	Each	459.28	22	Metric	10,104
20	14-44-a	Providing and fixing flushing bend of PVC of approved quality: 1.25" (32 mm)	Each	403.92	22	Metric	8,886
21	14-47-a	Providing and Fixing 1/2" (12 mm) dia connection including check nuts etc of approved quality: Plastic rubber connection	Each	283.85	27	Metric	7,664
22	14-48-a	Providing and Fixing brass ball float valve of approved quality: 1/2" (13 mm) dia	Each	488.62	12	Metric	5,863
23	14-48-c	Providing and Fixing brass ball float valve of approved quality: 1" (25 mm) dia	Each	815.71	11	Metric	8,973
24	14-55-f	Providing and Fixing GI pipe & including specials complete: 1/2" dia (light)	m	782.52	25	Metric	19,563
25	14-70-a	Providing and Fixing of pipe type B nikasi system including testing in all respect 110 mm	m	3131.13	200	Metric	626,226
26	14-70-b	Providing and Fixing of pipe type B nikasi system including testing in all respect 75 mm	m	1890.05	200	Metric	378,010
27	14-71-a	Providing and Fixing of polydex high pressure PPR (green including testing ect complete 25 mm(including all special etc)	m	656.02	220	Metric	144,324
28	14-71-b	Providing and Fixing of polydex high pressure PPR (green including testing ect complete 20 mm(including all special etc)	m	476.24	220	Metric	104,773
29	14-74-d	Providing and Fixing in position Gas water Geyser with fittings including thermostat, safety valve etc:- 50 Gallon Best Quality	each	46643.75	2	Metric	93,288
30	14-78	Providing and Fixing low level plastic flushing cistern 3 gallons (13.63) liters capacity, complete in all respects	Each	5259.32	3	Metric	15,778
31	14-86	Providing & fixing chromium plated double bib-cock with Muslim Shower of approved quality Complete is all respects.	Each	3039.58	22	Metric	66,871

32	14-104-b	Supply and Fixing of CP floor Truff Jalli with Grating 6"x6" complete	Each	926.3	15	Metric	13,895
33	14-139	Providing and fixing of approved quality and manufacturer best design Fire Extinguisher including all fittings complete in all respects.	Each	16253.54	15	Metric	243,803
34	14-144-c	Supplying and Fixing UPVC soil waste and vent pipe class B : 3" dia	m	1751.26	14	Metric	24,518
35	14-157	P-Trap (uPVC) for squatting type WC 4"	Each	1364.37	4	Metric	5,457
36	14-159	Undercounter Vanity type wash hand basin of approved make, colour, size, shape and quality, including jointing and sealing material, etc. with all accessories for complete installation.	Each	12095.7	5	Metric	60,479
37	24-18-a-04	Providing, laying, cutting, jointing, testing and disinfecting UPVC pressure pipeline in trenches (conforming to BS 3505 manufactured ) jointed with socket, elbow, tee, bend and plug bend etc.manufactured by the respective manufacturer complete as per specifications UPVC Pressure Pipes Class B (6 Bar) except excavation. 6" Nominal Pipe Size (NPS)	m	2883.97	120	Metric	346,076
<b>TOTAL SCHEDULE ITEM</b>							<b>3,184,967</b>
1	NSI-7	Supply and installation/fixing of 2 ft stainless steel SCRUB of 16 SWG with 01 automatic valves complete in all respect and as directed by the Engineer	Each	74755	1	Metric	74,755
2	NSI-8	Supply and installation/fixing of 5 ft stainless steel SCRUB of 16 SWG with 02 automatic valves complete in all respect and as directed by the Engineer	Each	378585	1	Metric	378,585
3	NSI-9	Providing manhole size 24" x 18" (inside dimensions) as per approved design and specifications complete for 4" to 12" dia pipes upto 4 ft. (1.2 m) depth with 16" dia.Concrete Cover fixed in 4" thick RCC 1:2:4 slab (with 5 lbs per Cu.ft. or 80 kg/Cu.m of s	Each	1883.72	15	Metric	28256
<b>TOTAL NON- SCHEDULE ITEM</b>							<b>481,596</b>

ESTABLISHMENT OF CATH LABS AT DIFFERENT HOSPITAL OF THE PROVINCE ON  
NEED BASIS "ADP NO 530/240233(2025-2026)BKMC/GKMC MTI Swabi

1	15-02-b-02	Supply and Erection PVC pipe for wiring purpose complete Recessed in walls including chase etc : 3/4" i/d	m	424.44	580	Metric	246,175
2	15-05-a	Supply and Erection single core PVC insulated copper conductor 250/440 V grade cable : 3/0.029" 1/2" i/d	m	104.92	3600	Metric	377,712
3	15-05-c	Supply and Erection single core PVC insulated copper conductor 250/440 V grade cable : 7/0.029"	m	191.88	2500	Metric	479,700
4	15-05-d	Supply and Erection single core PVC insulated copper conductor 250/440 V grade cable : 7/0.036"	m	240.74	1600	Metric	385,184
5	15-05-e	Supply and Erection single core PVC insulated copper conductor 250/440 V grade cable : 7/0.044"	m	384	1700	Metric	652,800
6	15-05-f	Supply and Erection single core PVC insulated copper conductor 250/440 V grade cable : 7/0.064"	m	882.81	750	Metric	662,108
7	15-05-g	Supply and Erection single core PVC insulated copper conductor 250/440 V grade cable : 19/0.064"	m	1321.6	600	Metric	792,960
8	15-07-d	Supply and Erection single core PVC insulated & sheathed copper conductor, 660/1100V cable : 19/0.083"	m	3358.43	500	Metric	1,679,215
9	15-07-e	Supply and Erection single core PVC insulated & sheathed copper conductor, 660/1100V cable : 37/0.072"	m	5125.42	255	Metric	1,306,982
10	15-11-b-05	Supply & Erection of 200 Amp Main switch iron illuminium clade 500 V and triple neutral link HRC Fuses	Each	12887.63	3	Metric	38,663
11	15-11-b-10	Supply & Erection of 600 Amp main switch iron illuminium clade 500 V and triple neutral link HRC Fuses	Each	26365.1	1	Metric	26,365
12	15-18-b	Supply and Erection switches 10/15 Amp : Recessed type	Each	134.76	240	Metric	32,342
13	15-36-j-12	Supply, installation, connecting, testing & commissioning of 10W LED Down Light Fixture suitable for 1300 lux, as per instruction of Engineer, surface mounted circular shape or equivalent.	No	1627.31	350	Metric	569,559

14	15-36-k-01	Supply, installation, connecting, testing and commissioning of Surface mounting LED tube light with 2x2000 lumens, complete in all respects	No	3356.31	12	Metric	40,276
15	15-50	Wiring of light/fan/call-bell point in 3/0.029" PVC insulated barecable in PVC pipe recessed	Each	2406.52	60	Metric	144,391
16	15-70-b	Supply and Erection transpower auto circuit breaker 3-phase, 400Vfungus moisture proofing : 60 Amp.	Each	2342.2	8	Metric	18,738
17	15-71-b	Supply and Erection single phase imported auto circuit breaker 15Amp.	Each	717.04	50	Metric	35,852
18	15-71-c	Supply and Erection single phase imported auto circuit breaker 20Amp.	Each	1013.44	46	Metric	46,618
19	15-75-b	Supply and Erection cubical type factory fabricated floor/wallmounting steel main board comp. : Recessed	m2	33481.14	2	Metric	66,962
20	15-77-a	Supply and Fixing electric AC exhaust/fresh air circulation(doubleway) 220/230 single phase plastic frame body and blade complete 8"x8"	Each	4837.17	22	Metric	106,418
21	15-77-b	Supply and Fixing electric AC exhaust/fresh air circulation(doubleway) 220/230 single phase plastic frame body and blade complete 10"x10"	Each	5439.85	20	Metric	108,797
22	15-77-c	Supply and fixing electric AC exhaust/fresh air circulation(Doubleway) 220/230 single phase plastic frame body and blade complete 12"x12"	Each	5879.57	24	Metric	141,110
23	15-79-a	Supply and Fixing PVC conduit for surface wiring (dura duct) 1/2"including all charges for nail screws etc	m	104.02	55	Metric	5,721
24	15-79-b	Supply and Fixing PVC conduit for surface wiring (dura duct) 1"including all charges for nail screws etc	m	144.54	50	Metric	7,227

25	15-79-c	PVC conduit for surface wiring (dura duct) 1.5" including allcharges for nail screws etc complete	m	176.95	50	Metric	8,848
26	15-79-d	PVC conduit for surface wiring (dura duct) 2" including all chargesfor nail screws etc complete	m	266.09	25	Metric	6,652
27	15-81	Supply and Fixing 20 Amp power plug	Each	290.01	110	Metric	31,901
28	15-83	Supply and fixing light plug 10 Amp	Each	228.26	125	Metric	28,533
29	15-100-d	Supply & erection of 200 KVA, 11/0.4 KV Transformer	No	1627469	1	Metric	1,627,469
30	15-107	Supply, installation, testing & commissioning of Lightning Protection System	Each	118487	1	Metric	118,487
31	15-127-k	Supply at site, installation, testing and commissioning of 3 pin switched socket unit 20 Amps, 250Volts, round pin including appropriate size MS, powder coated back box,	Each	774.7	60	Metric	46,482
32	15-127-p	Supply at site, installation, testing and commissioning of Three Pin 220 V 20 Amps Switch socket, complete in all respects.	Each	715.87	110	Metric	78,746
33	15-170-b	Precurement and Fixing of 08 Pin Kit with sheet	Each	1412.26	15	Metric	21,184
34	15-170-c	Precurement and Fixing of 06 Pin Kit with sheet	Each	1288.76	15	Metric	19,331
35	15-170-g	Precurement and Fixing of 01 Pin Kit with sheet	Each	671.26	10	Metric	6,713
36	25-37	Providing and Fixing stair railing of 2.5" i/d Gi pipe, welded with 5/8"x5/8" MS bars 2'-9" high, fixed in each step	m	3751.7	78.48	Metric	294,433
37	26-01-c-06	Supply and Erection of AC ENERGY EFFICIENT LED LIGHT BULBS (16-20 W)	No	839.43	40	Metric	33,577
38	26-01-l-01	Supply and Erection of AC ENERGY EFFICIENT CEILING FANS 56 inch, 30 W	No	13821.55	72	Metric	995,152
39	26-01-p-01	Supply and Erection of INVERTER BASED SPLIT AC (01 Ton)	No	161625.3	6	Metric	969,752
40	26-01-p-02	Supply and Erection of INVERTER BASED SPLIT AC (1.5 Ton)	No	217200.3	13	Metric	2,823,604
41	26-01-p-03	Supply and Erection of INVERTER BASED SPLIT AC (02 Ton)	No	260425.3	5	Metric	1,302,127
<b>Total AMOUNT</b>							<b>16,384,866</b>

**ESTABLISHMENT OF CATH LABS AT DIFFERENT HOSPITAL OF THE PROVINCE ON  
NEED BASIS "ADP NO 530/240233(2025-2026)BKMC/GKMC MTI Swabi**

1	NSI 1	Supply & instalation of CCTV Camara (4MP) with night vision, Water proof, weather proof, PTZ,	No	31250	17	Metric	531,250
2	NSI 2	Supply and installation of 1 gig SFPs for access switches. Brand: Cisco/Huawei/Dlink	No	43750	4	Metric	175,000
3	NSI 3	Supply & installation 32 PORT NVR (Supporting => 20 TB support on two ports) rack	No	187500	1	Metric	187,500
4	NSI 4	Supply & installation HDD 10 TB Surveillance grade	No	112500	2	Metric	225,000
5	NSI 5	Supply & installation of 55" LED Smart Screen for Surveillance Room - •Corporate LED	No	562500	1	Metric	562,500
6	NSI 6	Supply & installation of 55" LED Smart Screen, 4k resolution for information and waiting areas	No	312500	3	Metric	937,500
7	NSI 7	Supply & Fixing of I/O,s Face Plate & Box Double Jack. Each counter will be connected with	No	1875	15	Metric	28,125
8	NSI 8	Supply & installation 22 U Cabinet with builtin cooling fans. Branded	No	100000	1	Metric	100,000
9	NSI 9	Supply & installation 9 U Cabinet with buit in cooling fans. Branded	No	31250	4	Metric	125,000
10	NSI 10	Access Point WiFi 6 & 7, 3.6Gbps aggregate wireless throughput or more, 5Gbps	No	125000	4	Metric	500,000
11	NSI 11	Supply & fixing of 24 Port POE Networking Switch. Brand: Huawei	No	187500	4	Metric	750,000
12	NSI 12	Supply & Fixing Patch-Pannel 24 ports With 24 I/Os to be installed at each 9 U Rack	No	50000	4	Metric	200,000
13	NSI 13	CAT6/CAT6e ethernet cable pure copper, 23 AWG, Branded and tested. This must be approved	box	87500	5	Metric	437,500
14	NSI 14	Supply network Patch cord CAT6 1Meter	No	625	100	Metric	62,500
15	NSI 15	Patch cord LC/LC	No	1000	4	Metric	4,000
16	NSI 16	Patch cord SC/SC	No	1000	4	Metric	4,000
17	NSI 17	Optic Fiber Media Converter pair. Brand: Microlink/Itech/dlink	Pair	15000	2	Metric	30,000
18	NSI 18	1 KVA pure sign wave online UPS for Network Racks	No	100000	4	Metric	400,000
19	NSI 19	Supply Patch cord CAT6 3Meter	No	1062.5	50	Metric	53,125

20	NSI 20	6 Core Fiber Optice Connection. Angiography Suit to Server Room - 300 to 500 meters	Meter	125	350	Metric	43,750
21	NSI 21	External USB CD Room/Writer for CD/DVD Reading/Writing (Branded)	No	8750	2	Metric	17,500
22	NSI 22	Supply & installation of AIO Computer Systems, Core i7, 14 Generation and/or latest, 16 GB	No	500000	7	Metric	3,500,000
23	NSI 23	LaserJet B&W Printer with 35 + PPM or above. Brand: HP	No	150000	6	Metric	900,000
24	NSI 24	LaserJet Color Printer with 20 PPM color and 30 PPM B&W or above. Brand: HP	No	187500	1	Metric	187,500
25	NSI 25	Supply and installtion of Multimedia Project => 4000 lumens along with motorized	No	312500	1	Metric	312,500
26	NSI 26	Power Distribution Unit - Surge protector power extentions	No	6250	4	Metric	25,000
27	NSI 27	Supply & installation of 'Telephone Cable for intercom of IP Telephone on all floors - CAT	roll	87500	2	Metric	175,000
28	NSI 28	Supply & installation of Telephone I/O Box, Face Plate with RJ 45 Connector	No	1250	11	Metric	13,750
29	NSI 29	Supply & installation of IP Telephone Sets. This will be connected through RJ45/Ethernet	No	31250	11	Metric	343,750
<b>TOTAL AMOUNT</b>							<b>10,831,750</b>

**ESTABLISHMENT OF CATH LABS AT DIFFERENT HOSPITAL OF THE PROVINCE ON  
NEED BASIS "ADP NO 530/240233(2025-2026)BKMC/GKMC MTI Swabi**

1	15-131-C	Supply, installation, testing & commissioning of Analogue Addressable Sounder with Flasher, 24 VDC, Mounting Base and with Base and Back Box with Key UL Listed complete in all respects.	Each	18017.17	6	Metric	108103
2	15-131-d	Supply, installation, testing & commissioning of Analogue Addressable Optical Smoke Detector with Base; 24 VDC; UL LISTED, low voltage, solid state, Not Radio Active type, uni-polar and dual chamber with LED alarm indication to be installed on RCC slab, complete in all respects.	Each	17	50	Metric	687,751
3	15-131-h	Supply, installation, connecting, testing and commissioning of conventional type Fire Alarm Control Panel (FACP) having 2 zone conventional type	No	92893.81	2	Metric	185,788
4	15-170-a	Precurement and Fixing of 10 Pin Kit with sheet	Each	1535.76	20	Metric	30,715
5	14-146	Fire Hose cabinet with 30 meter Hose Reel and Nozzle Complete with accessories	Each	62287.63	3	Metric	186,863
<b>TOTAL AMOUNT</b>							<b>1,199,220</b>

## Stipulations

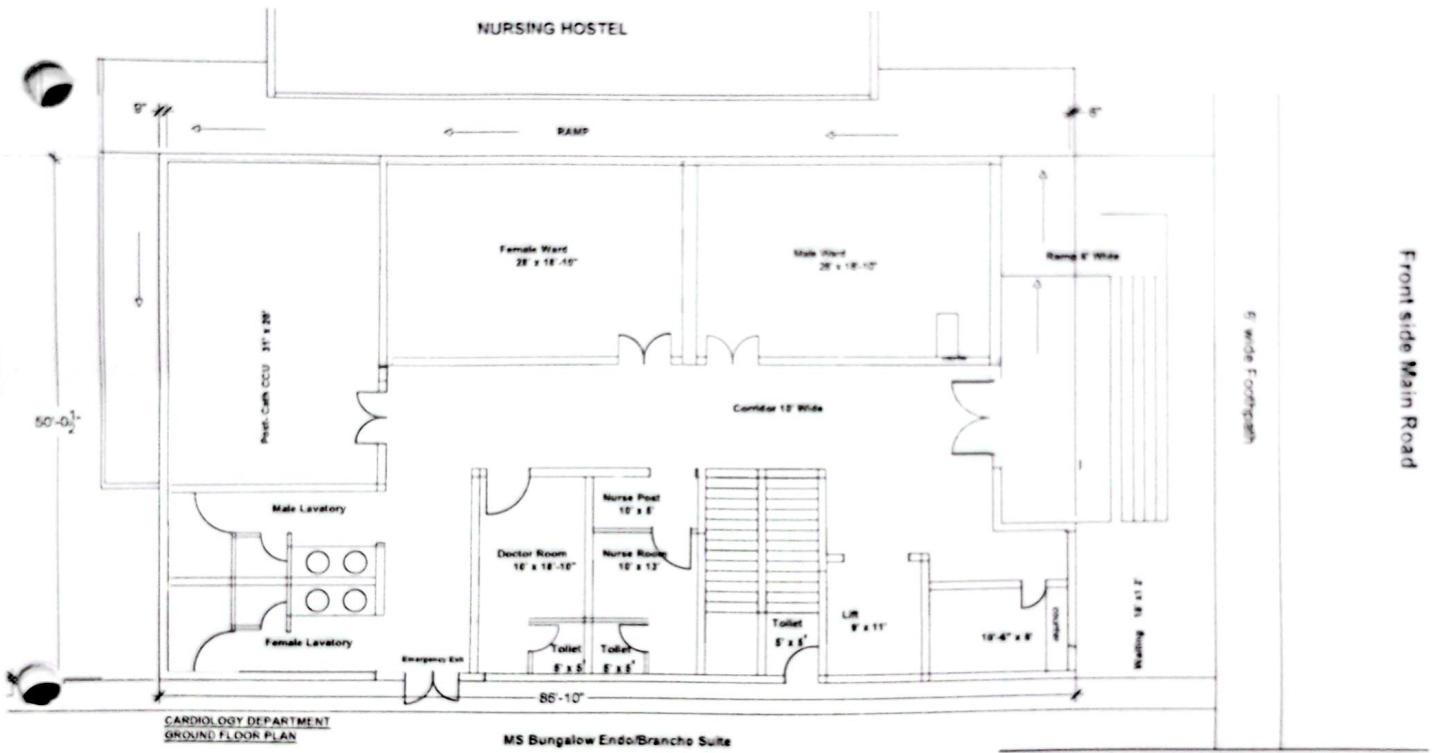
**Payment Schedule:** Interim Payments shall be made on available of funds as it is ADP scheme, measurements will be taken jointly from site by the BKMC/GKMC-MTI Swabi Engineer and the contractor's Engineer and invoice shall be made accordingly. The contractor will continue the construction activities at own resources and will not delay the work unnecessarily.

**Retention Money:** 10% retention money shall be retained from the invoice, 50% of the retained money will be released to contractor on completion of the work and the 50% shall be released upon successful completion of defects liability period.

**Time for completion:** 450 days will be the completion time for the work, starting from the commencement of work on site.

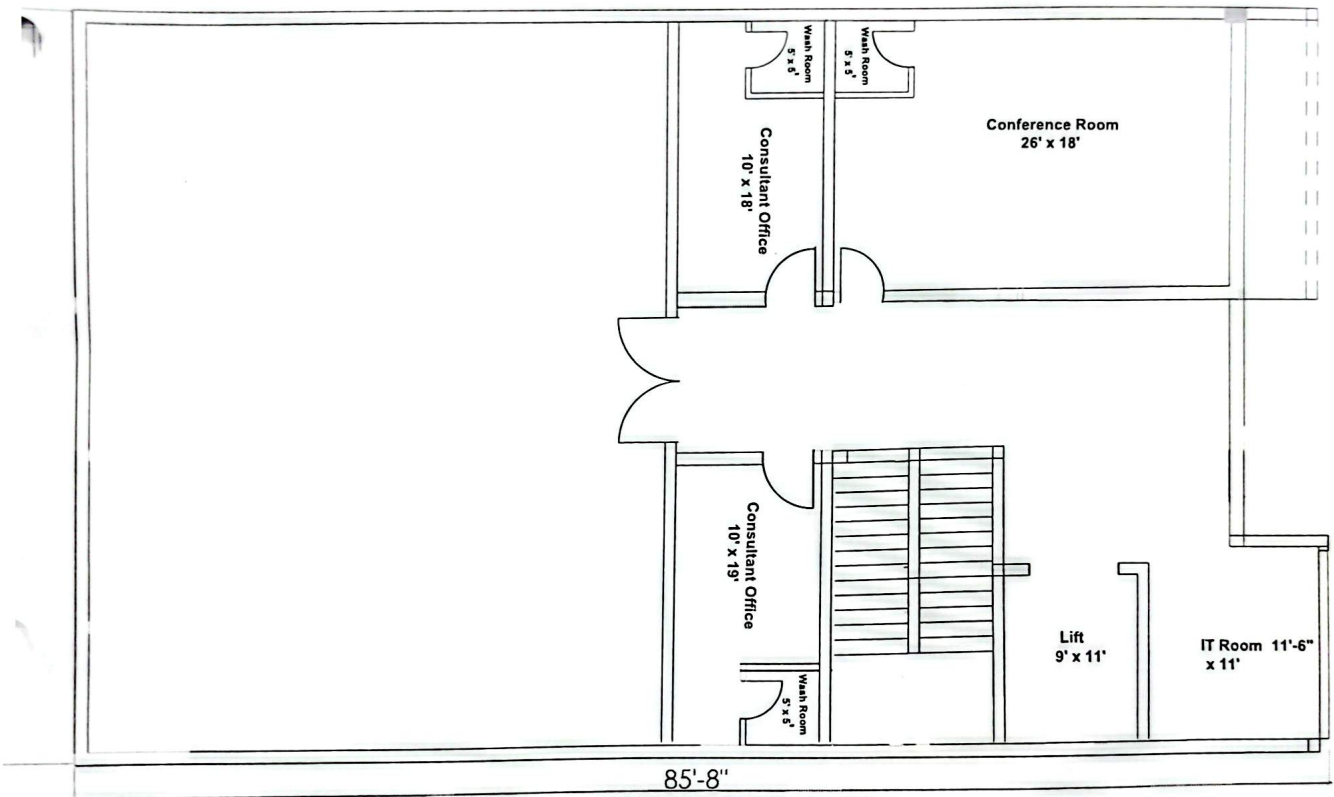
**Defects Liability Period:** Defects liability period shall be 180 days

**Liquidated Damages:** In case of delay in completion, the liquidated damages shall be applied 0.05% per day of the remaining work value.



NURSING HOSTAL

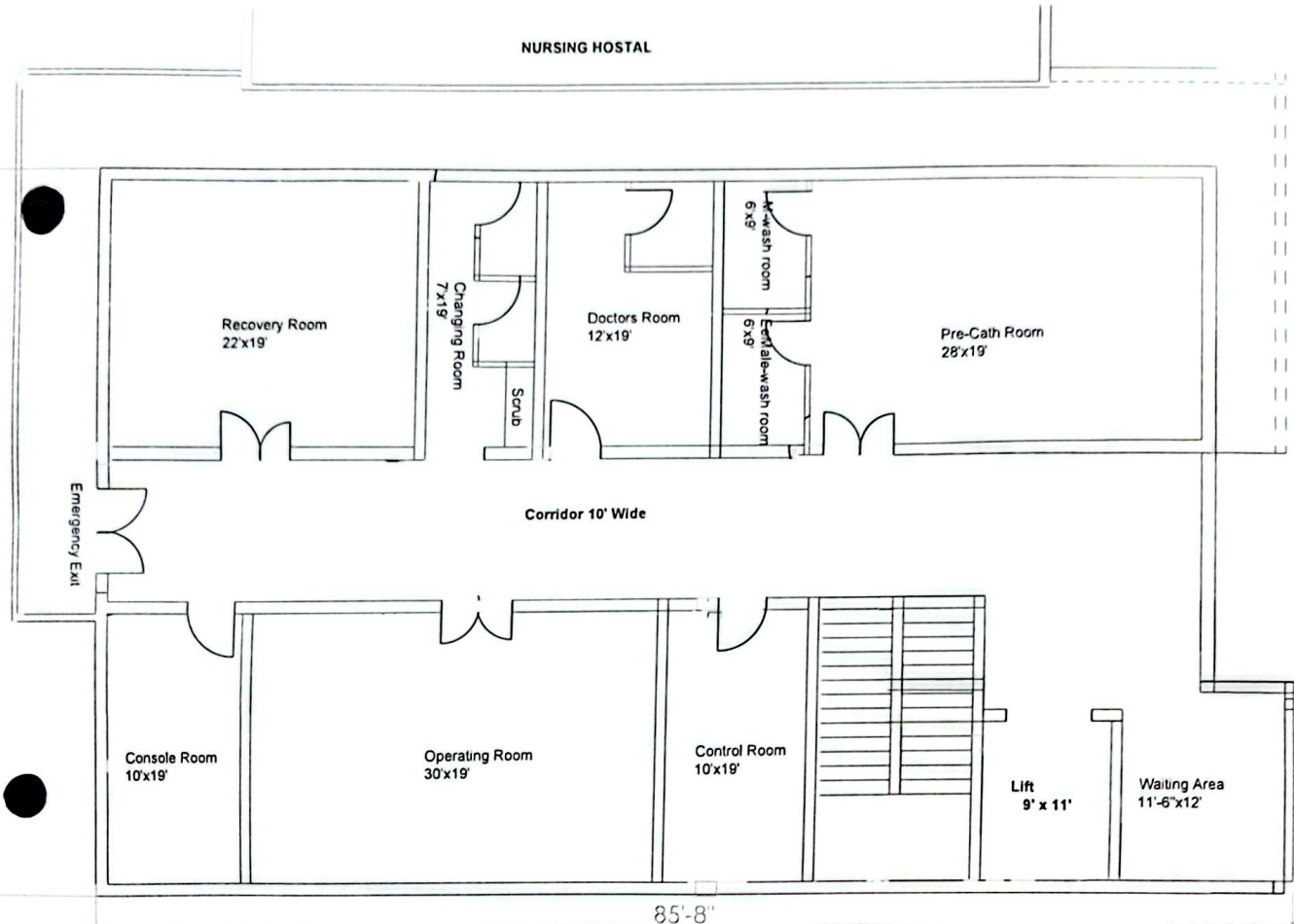
Front side Main Road



**CARDIOLOGY DEPARTMENT**  
**2nd FLOOR PLAN**

**MS Bungalow Endo/Brancho Suite**

NURSING HOSTAL



Front side Main Road

Emergency Exit

Recovery Room  
22'x19'

Changing Room  
7'x19'

Doctors Room  
12'x19'

Wash room  
6'x9'

Scrub  
6'x9'

Pre-Cath Room  
28'x19'

Corridor 10' Wide

Console Room  
10'x19'

Operating Room  
30'x19'

Control Room  
10'x19'

Lift  
9' x 11'

Waiting Area  
11'-6" x 12'

85'-8"

**CARDIOLOGY DEPARTMENT**  
**1st FLOOR PLAN**

**MS Bungalow Endo/Brancho Suite**